



WELCOME TO



Canadian Mental
Health Association
Prince Edward Island

PRINCE EDWARD
AQUA FARMS INC.

Summerside Spring
Gala

A FUNDRAISING
EVENT IN SUPPORT
OF CMHA PEI'S
MENTAL HEALTH
PROGRAMS AND
SERVICES

PRINCE EDWARD
AQUA FARMS INC.



Canadian Mental
Health Association
Prince Edward Island

9th Annual Summerside Spring Gala

SPONSORSHIP OPPORTUNITIES

SATURDAY, MAY 10TH, 2025, 7 PM VETERAN'S CONVENTION
CENTRE (VCC) CREDIT UNION PLACE, SUMMERSIDE, PE

PROCEEDS SUPPORT THE CANADIAN MENTAL HEALTH
ASSOCIATION PEI DIVISION





THE CAUSE

The Canadian Mental Health Association, PEI Division, is a community-based organization that began its work on Prince Edward Island as a division of CMHA National in 1959. Our mandate is *Mental Health for All*. Our mission is to promote the mental health of all Islanders by enabling individuals, groups and communities to increase their control over, and enhance, their mental health. To carry out this mission, our 50+ volunteers and 100+ support staff provide programs and services, education and information, research, advocacy and social policy development designed to help all Islanders improve their mental wellness.

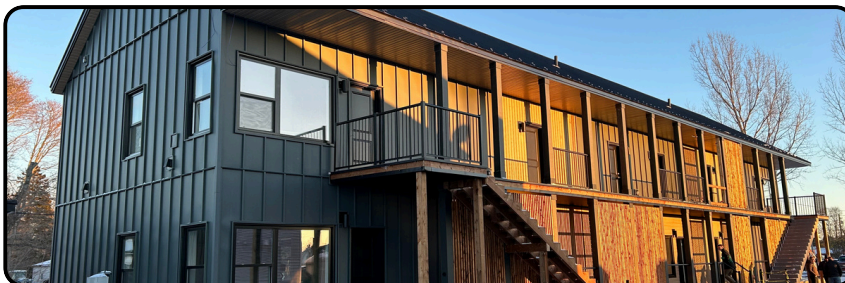
We have offices, programming space and housing units in Montague, Charlottetown, Summerside and Alberton. All money raised stays on PEI in support of mental health programs and services for Islanders. To learn more about what we do, please visit www.pei.cmha.ca.



Canadian Mental
Health Association
Prince Edward Island



- Summerside Notre Dame Place Clubhouse
- Alberton Hope Centre Clubhouse
- *New* Alberton Affordable Housing Unit



THE EVENT

The Canadian Mental Health Association, Prince Edward Island Division proudly hosts the Summerside Spring Gala annually to bring awareness to the mental health needs of Islanders in the Summerside and West Prince communities of PEI, and to raise funds for CMHA PEI programs and services in these areas to help those in need of mental health support.

This will mark the 9th year of the event. Ticket holders will enjoy an evening of entertainment with local presenters and musical guests, accompanied by a three-course dinner provided by FiveEleven West restaurant. The night features emotional and raw testimonials that spotlight first-hand accounts from CMHA PEI clients. These testimonials highlight the client's story and the critical role of CMHA PEI's mental health programs and services in their mental health journey to recovery.

Please visit www.pei.cmha.ca for tickets, and more information on the evening as it becomes available.

HOW YOU CAN HELP


Funds for this event are raised through monetary donations, an event raffle and a silent auction made up of kindly donated products and services by local individuals, groups and businesses. Proceeds are also gathered through generous support and sponsorship. We ask that you please consider sponsoring CMHA PEI's 9th Annual Summerside Spring Gala event, and join us in our mission to provide Islanders in Summerside and West Prince with accessible, safe and secure mental health resources. Sponsorship tiers and benefits are outlined below.

SPONSORSHIP OPPORTUNITIES

The success of CMHA PEI's Summerside Spring Gala is largely due to our dedicated sponsors, partners and supporters. As an organization dedicated to your community, you are surely an ideal partner for us in this venture. Below are this year's available sponsorship levels and the benefits associated with each.



Spring Gala SPONSORSHIP OPPORTUNITIES

FEATURES	BRONZE \$1000	SILVER \$2,500	GOLD \$5,000	SIGNATURE \$10,000
Recognition on Website and Social Media	✓	✓	✓	
Event Tickets	2 Tickets	4 Tickets	8 Tickets	16 Tickets
Public Thank you During the Event	✓	✓	✓	✓
Recognition on Signage at the Event		✓	✓	✓
Opportunity to Display Signage at the Event			✓	✓
Company Description in Event Program			✓	✓
Cheque Presentation/ Photo Opportunity for Distribution to Media			✓	✓
Event Naming "Company Name" Spring Gala & Exclusivity				✓

MONETARY DONATIONS

You may also choose to make a monetary donation (receipts available).
CMHA-PEI Charitable Tax Number: 106863590 RR0001

IN KIND DONATIONS

In the past, we have successfully raised over \$15,000 at the Summerside Spring Gala through raffles, a silent auction and the sale of gift cards. This would not be possible without the kinhearted individuals, groups and businesses that donate goods and services to be used for these fundraising aspects.

We ask you to please consider donating items or services valued at over \$100 for use in the silent auction and/or the raffle draw. We are also accepting gift cards valued at \$50 (or more) to sell at face value, increase proceeds for the evening, and ensure it's a success!

All donors will be listed in the event program insert. Tax receipts will be issued for cash donations only, cash donors will be thanked from the podium, and those donations will be added to the fundraising total for the evening.

CORPORATE TABLES

Corporate tables of 6 and 8 are available at \$100/seat. Tables can be purchased online at www.pei.cmha.ca or by calling directly to the contact listed below.

CONTACT INFORMATION

We thank you for taking the time to consider supporting CMHA PEI's 9th Annual Summerside Spring Gala in support of critical community mental health programs and services.

Please reach out to the contact listed below for sponsorship, in-kind donations, and/or monetary donations.

Brian Tremblett, Fund Development Coordinator
b.tremblett@cmha.pe.ca

OR

(902) 628-3668 O

(709) 424-7901 C

